




Collamat® C 7300

Labelling Your Product - Our Competence.

Swiss Modular Labellers 

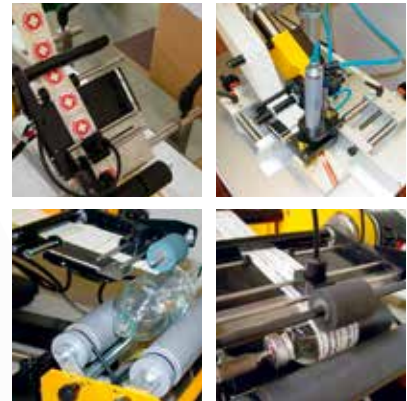
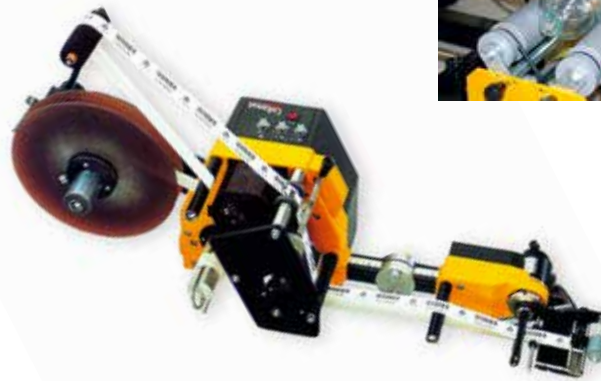
Collamat®

Collamat® C 7300

The all-rounder. With the Collamat® C 7300 high performance labeller you get a perfect solution for any standard application even at high speeds or great throughput.

The Collamat® C 7300 can be used in all types of industries – from food and beverage, through pharmaceutical to storage and logistics. Its simple design and its mechanical ingeniousness keep the price very competitive and make the machine reliable and practically maintenance-free. At the same time, they also make it easy to operate, minimize the training and the change-over times.

The powerful motor allows for speeds up to 50 m/min (65ft/min), which matches the ones of most industrial lines. The Collamat® C 7300 can therefore be easily integrated into production lines with actual high speeds. The Collamat® C 7300 is very compact, space-saving and easy to operate – as yet another example of our motto "Simplicity is a prerequisite for reliability". Designed for fully automated applications, the Collamat® C 7300 offers a great solution, with long-lasting functionality, accuracy and reliability for any type of production.



FEATURES

Flexibility – Wide application range thanks to the availability of various applicators for specific products; a spring loaded flap applicator for pass-through labelling of uneven products; a flap applicator with magnet for pass-through labelling in small cavities or of light products; a blow-on for labelling without contact with the product; a tamp-on for stand-still labelling or labelling in cavities.

Collamat® design – Electronics, drive unit, backing paper re-winder and control panel integrated in one, space-saving unit.

Modularity – The Collamat® well-known module rail design facilitates the installation of printers, scanners or other devices. Easy adaptation to new applications. Fast change-over times.

Easy operation – Settings can easily be changed by four potentiometers.

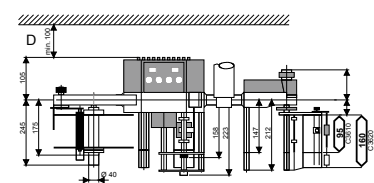
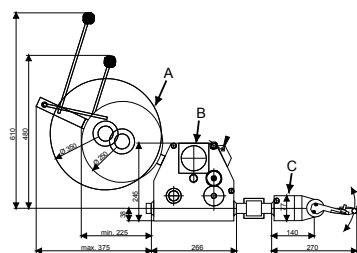
Fast set up – Set the label scanner, pre-dispensing, label position and application speed – and you are ready to work.

TECHNICAL DATA

Operational speed	1 – 50 m/min (3 ¼ - 164 ft/min)
Max. label width	95 mm (3 ¾ in.) or 160 mm (6 ¼ in.)
Labelling accuracy	± 1 mm (1/25 in.)
Min. label length	10 mm (13/32 in.)
Max label reel diameter	250 mm (9 ¾ in.) or 350 mm (13 ¾ in.)
Connectivity	Outputs: Signals for printer and error Inputs: Goods scanner and end of label detection
Settings	By potentiometers
Drive	2-phase stepper motor
Control	Microprocessor
Voltage	115 / 230 V; 60 / 50 Hz; 198 VA Feed button for manual label dispensing, i.e. threading the label web
Applicators	Spring loaded flap, flap with magnet, blow-on, tamp-on
Version	Right or left
Options	Side labelling kit, extended peel plate, pressure brushes, label end detection, digital control box, etc.
Approbation	CE

All data are indicative and may be subject to alteration

Collamat®



Hofackerstrasse 73, CH-4132 Muttenz, Switzerland
Tel.: +41 61 756 28 28, Fax: +41 61 756 29 29
contact@collamat.ch, www.collamat.ch

Swiss Modular Labellers 